

PROCESS & PIPELINE SERVICES DIVISION

BETHEL ENGINEERING SERVICES LIMITED

EQUIPMENT DETAILS

FOR

**FLOODING, HYDRO-TEST, DEWATERING, CLEANING, DRYING
AND PURGING**

CONTACT DETAILS:

PORT HARCOURT MAIN OFFICE

**BETHEL ENGINEERING SERVICES LIMITED
Beulah Close, km 4, New Airport Link Road**

(Behind Chapel of Goodnews Church)

Off Aba –Ph Express Way, By Airforce Junction,

Port Harcourt Nigeria

Phone: 234 (0)803 306 5490

Email: bethelserve@bethelengineeringservices.com

Bethelserve@yahoo.com

PROCESS & PIPELINE SERVICES DIVISION

EQUIPMENT SPECIFICATIONS/DETAILS

BETHEL ENGINEERING SERVICES LIMITED assigns reliable and very effective equipment to all its projects, we also relate with other servicing

Company to provide our client with relevant equipment when not in our stock. BETHEL ENGINEERING SERVICES LIMITED alliance with its Partners in USA, EUROPE and ASIA also keep the company closer to latest equipment and technology whenever such needs come up.

PROCESS & PIPELINE SERVICES DIVISION

SPP SPLIT CASING PUMP

Stock No: BES/CP/001

ENGINE DATA: DETROIT DEISEL, V8 71 SERIES, TURBO
CHARGED

Flow rate:	38 bbl/min (54,000bbls/day)
Size:	8"x10"
Horse Power	400
Pressure rating:	285psi (19Bars)
Weight (kg)	4,500kg (4.5 Tons)
Dimensions L x H x W (ft)	10 X 7 X 5 Ft



BETHEL ENGINEERING SERVICES LIMITED

PROCESS & PIPELINE SERVICES DIVISION

SPP SPLIT CASING PUMP

Stock No: BES/CP/003

ENGINE DATA: DETROIT DEISEL, V12 71 SERIES

Flow rate:	38 bbl/min (54,000bbls/day)
Size:	8"x10"
Horse Power	450
Pressure rating:	285psi (19Bars)
Weight (kg)	5000kg (5.0 Tons)
Dimensions L x H x W (ft)	12 X 6 X 4 Ft



BETHEL ENGINEERING SERVICES LIMITED

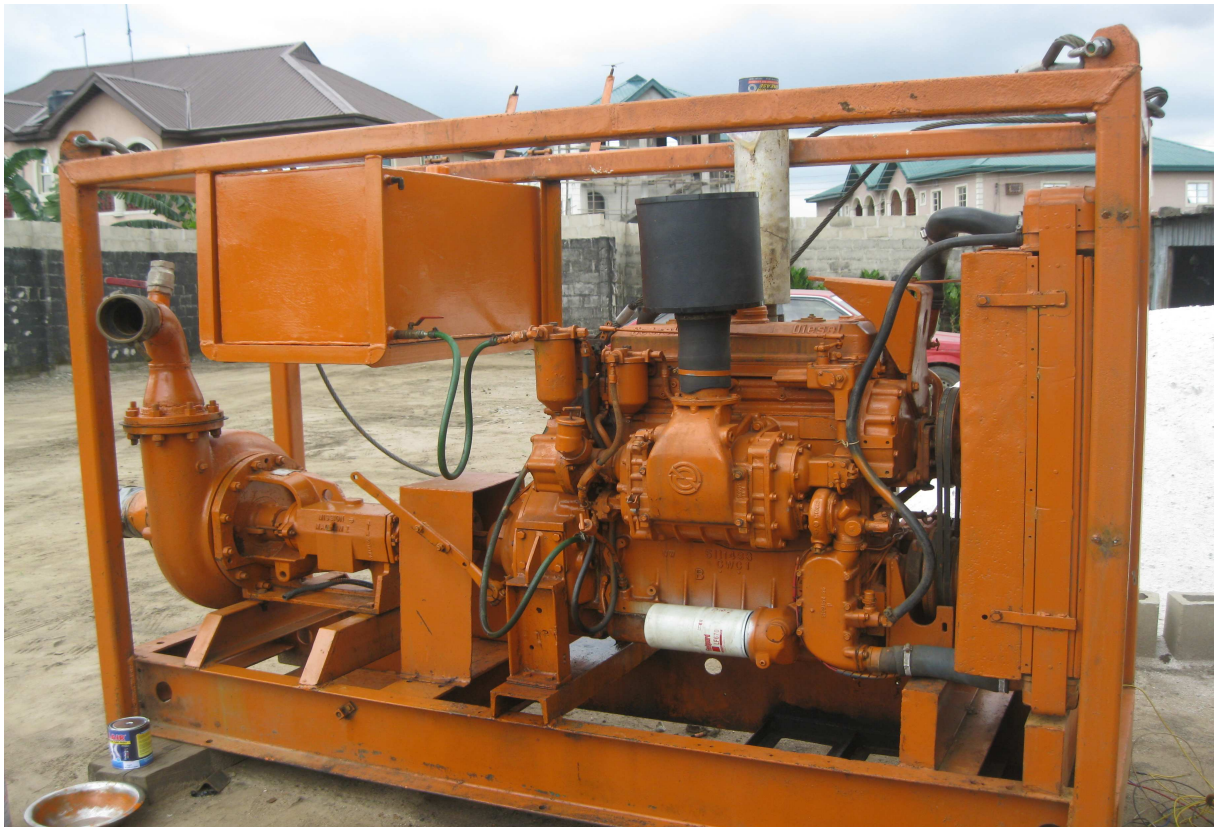
PROCESS & PIPELINE SERVICES DIVISION

MAGNUM – MISSION CENTRIFUGAL PUMP

Stock No: BES/CP/002

ENGINE DATA: DETROIT DEISEL, 471 SERIES

Flow rate:	20 bbl/min (29,000bbls/day)
Size:	8"x6"
Horse Power	250
Pressure rating:	150psi (10Bars)
Weight (kg)	2500kg (2.5 Tons)
Dimensions L x H x W (ft)	9 X 6 X3 Ft



BETHEL ENGINEERING SERVICES LIMITED

PROCESS & PIPELINE SERVICES DIVISION

EBARA MULTISTAGE (6 STAGE) PUMP

Stock No: BES/CP/004

ENGINE DATA: DETROIT DEISEL, V8 92 SERIES, TURBO CHARGED

Flow rate:	35 bbl/min (50,000bbls/day)
Size:	6"x6"
Horse Power	450
Pressure rating:	550psi (35Bars)
Weight (kg)	6,000kg (6.0 Tons)
Dimensions L x H x W (ft)	12 X 7 X 5 Ft



BETHEL ENGINEERING SERVICES LIMITED

PROCESS & PIPELINE SERVICES DIVISION

EBARA MULTISTAGE (4 STAGE) PUMP

Stock No: BES/CP/005

ENGINE DATA: DETROIT DEISEL, V8 92 SERIES, TURBO CHARGED

Flow rate:	35 bbl/min (50,000bbls/day)
Size:	6"x6"
Horse Power	450
Pressure rating:	450psi (25Bars)
Weight (kg)	5500kg (5.5 Tons)
Dimensions L x H x W (ft)	12 X 7 X 6 Ft



BETHEL ENGINEERING SERVICES LIMITED

PROCESS & PIPELINE SERVICES DIVISION

STORK SELF PRIME CENTRIFUGAL PUMP

Stock No: BES/CP/006

ENGINE DATA: DETROIT DEISEL, V6 92 SERIES, TURBO CHARGED

Flow rate:	20 bbl/min (29,000bbls/day)
Size:	6"x6"
Horse Power	200
Pressure rating:	100psi (7Bars)
Weight (kg)	3000kg (3.0 Tons)
Dimensions L x H x W (ft)	9 X 7 X 3 Ft



BETHEL ENGINEERING SERVICES LIMITED

PROCESS & PIPELINE SERVICES DIVISION

GOLMAN RUPP SELF PRIME CENTRIFUGAL PUMP

Stock No: BES/CP/007

ENGINE DATA: FORD - 4 CYLINDER DEISEL ENGINE

Flow rate:	20 bbl/min (29,000bbls/day)
Size:	6"x6"
Horse Power	150
Pressure rating:	105psi (7 Bars)
Weight (kg)	2000kg (2.0 Tons)
Dimensions L x H x W (ft)	7 X 5 X3 Ft



BETHEL ENGINEERING SERVICES LIMITED

PROCESS & PIPELINE SERVICES DIVISION

National Q300 Quintuplex pump with 5.5" plunger

Stock No: BES/CP/008

ENGINE DATA: DETROIT DEISEL, V8 92 SERIES, TURBO CHARGED

Flow rate:	13 bbl/min (29,000bbls/day)
Size:	8"x6"
Horse Power	450
Pressure rating:	1500psi (100 Bars)
Weight (kg)	12000kg (12.0 Tons)
Dimensions L x H x W (ft)	20 X 7 X 8 Ft



BETHEL ENGINEERING SERVICES LIMITED

3" AIR DIAPHRAM PUMP



SPECIFICATIONS

LENGTH - 20"

WIDTH - 11"

HEIGHT - 33"

WEIGHT - 115#

AIR INLET - 3/4 CROW

GPM - 260

MAX PARTICLE SIZE - .375

SUCTION LIFT - 20'

Nitrogen storage tank:

For industrial nitrogen pumping applications



SPECIFICATIONS

Pmax (barg) : 3

Pmax (barg) : 3

Pmin (barg) : 1

Storage Ln2 (ltr 8100

Storage Gn2 (Nm³ @15°C) 5700

t.max (°C) : -196

t.min (°C) : -196

Weight (tons) : 3,7 (9,9 incl N2)

Dimensions (LxWxH) (m) : 6,0 x 2,5 x 2,5

Transport : Skid mounted

Built (year) : 1995

Base : Port Harcourt

PROCESS & PIPELINE SERVICES DIVISION



350 BARRELS CAPACITY HOLDING TANK

PROCESS & PIPELINE SERVICES DIVISION

500 BBL Round Skid Mounted Holding Tank



BETHEL ENGINEERING SERVICES LIMITED

PROCESS & PIPELINE SERVICES DIVISION



Water filtration Unit

PROCESS & PIPELINE SERVICES DIVISION

20,000 PSI @ 24 GPM OFFSHORE HYDROBLASTER



SPECIFICATIONS

LENGTH - SKID MNT 159"

WIDTH - SKID MNT 74"

HEIGHT- SKID MNT. 93"

WEIGHT 9450#

FUEL CAP. 250

RUN TIME - 22 HR.

WATER INLET 1" CROW FOOT

WATER OUTLET 13 MM MP

BETHEL ENGINEERING SERVICES LIMITED

8x8 DIESEL VAC ASST. OFFSHORE PUMP



SPECIFICATIONS

LENGTH - 9FT
WIDTH - 5 FT
HEIGHT- 6' 3"
WEIGHT 3290#
FUEL CAP. 148 GAL.
RUN TIME 56HR.
GPM 5,000
MAX LIFT 30'
MAX HEAD 135'

PROCESS & PIPELINE SERVICES DIVISION

AIR DRYER

Air Drying Unit, medium volume.

Provides super dry air for all process, plant and pipeline drying operations



BETHEL ENGINEERING SERVICES LIMITED

PROCESS & PIPELINE SERVICES DIVISION

COMMISSIONING SKID/MANIFOLD



BETHEL ENGINEERING SERVICES LIMITED

SULLAIR AIR COMPRESSORS

CAPACITIES: 1150, 950, 825 CFM

